



## Malts Lane, Thetford, Norfolk, IP26 4LA

**Rent - Asking Price £440,000      Deposit -**

Situated on the edge of the village, this chain-free, spacious four-bedroom detached home enjoys open countryside views and a wonderful sense of space and privacy.

The property offers versatile living accommodation, including two well-proportioned reception rooms and a large, well-equipped kitchen, ideal for both everyday living and entertaining. Upstairs, there are four generous bedrooms, with the principal bedroom benefiting from an en-suite bathroom.

Externally, the home further benefits from a double garage, ample off-road parking, and a large garden, providing plenty of outdoor space to enjoy the surrounding rural setting.

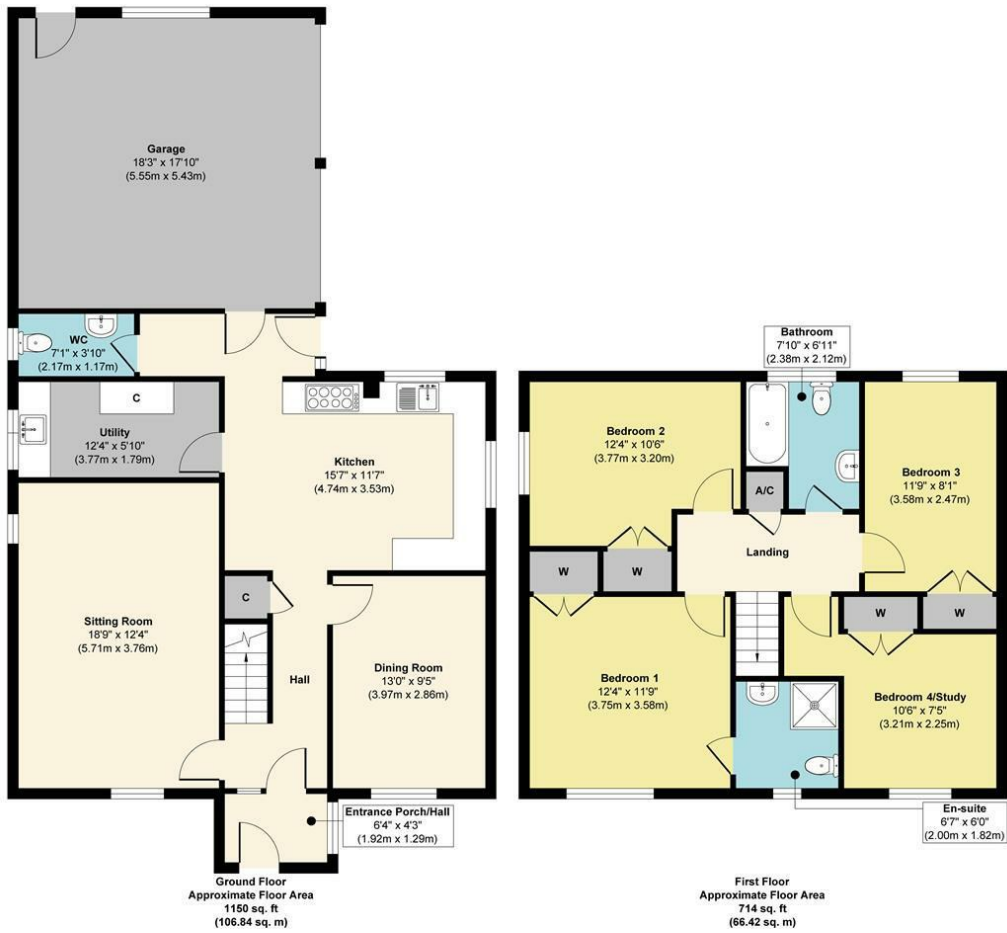
- DETACHED COUNTRY STYLE HOME
- TWO RECEPTIONS
- DOUBLE GARAGE
- LARGE WELL EQUIPPED KITCHEN
- CALL NOW TO VIEW
- FOUR BEDROOMS
- NO ONWARD CHAIN
- LARGE GARDEN
- COUNTRYSIDE VIEWS



Council Tax Band: D - EPC Rating: D 57



## Malts Lane, Hockwold-Cum-Wilton, IP26 4LA



Approx. Gross Internal Floor Area 1864 sq. ft / 173.26 sq. m

**Henleys**  
Independent Estate Agent

